



Sample image

## Datasheet

**Article number:** 70047075  
**Designation:** KG100.K301/DKA192.VE  
**Description:** Switchgear

<b>IEC 60947-3 EN 60947-3, VDE 0660 Teil 107</b>						
<b>Rated insulation voltage Ui</b>						
		Voltage (V) AC / DC				
		690 AC				
<b>Rated uninterrupted current Iu/Ith</b>						
Current (A)	Ambient temperature (°C)	Peak temperature (°C)	additional requirements			
100	50	55	Ambient temperature +50°C during 24 hours with peaks up to +55°C			
<b>Rated operational current Ie</b>						
Utilization category		Voltage (V)		Current (A)		
AC-32A		20 - 400		100		
<b>Rated operational power</b>						
Utilization category	Voltage (V)	No. of phases	No. of poles	Power (kW)		
AC-3	220 - 240	3	3	18,50		
AC-3	380 - 440	3	3	30		
AC-3	660 - 690	3	3	22		
AC-23A	220 - 240	3	3	22		
AC-23A	380 - 440	3	3	37		
AC-23A	660 - 690	3	3	30		
<b>Max. Fuse rating IEC</b>						
Fuse characteristic		No. of Fuses		Current (A)		
gG		1		100		
<b>UL60947-4-1 , UL508</b>						
<b>Nominal Voltage</b>						
		Voltage (V) AC / DC				
		600 AC				
<b>Rated insulation voltage Ui</b>						
		Voltage (V) AC / DC				
		600 AC				
<b>Rated thermal current</b>						
		Current (A)	Ambient temperature (°C)	Additional Text		
		100	0 - 40	-		
<b>Horsepower rating</b>						
Across-the-Line Motor Starting	Voltage (V)	No. of phases	No. of poles	Power (HP)	Ambient temperature [°C]	
DOL	110 - 120	1	2	5	40	
DOL	220 - 240	1	2	15	40	
DOL	277 - 277	1	2	15	40	
DOL	415 - 415	1	2	25	40	
DOL	440 - 480	1	2	30	40	
DOL	550 - 600	1	2	30	40	
DOL	110 - 120	3	3	10	40	
DOL	220 - 240	3	3	25	40	
DOL	415 - 415	3	3	40	40	
DOL	440 - 480	3	3	50	40	
DOL	550 - 600	3	3	50	40	
<b>SCCR / Max. fuse rating</b>						
<i>Conditions of acceptability</i>						
These devices are suitable for use on circuits capable of delivering not more than 10kA rms symmetrical amperes, 600V ac max. when protected by Type RK1 fuses or Circuit Breaker Type SFHA36AT0250, manufactured by General Electric.						
Suitable for use on a circuit capable of delivering not more than 65000 rms symmetrical amperes 600V max., when protected by Class J fuses, 100A max.						
<b>Temp. rating of wire</b>						
		Temperature rating (°C)	Current (A)		Text	
		75	-		-	
<b>Connecting instructions</b>						
<i>Markings</i>						
Break all lines.						
<b>General Use</b>						
AC / DC	Voltage (V)	Current (A)	No. of phases	No. of poles	No. of contacts in series	
AC	277	100	1	1	1	

General Use					
AC / DC	Voltage (V)	Current (A)	No. of phases	No. of poles	No. of contacts in series
AC	600	100	1	2	1
AC	600	100	3	3	1

**General Information**

*Text*

- The operating handle and position indicating means to be used with these manual motor controllers should be provided from the manufacturer, or the operating handle and position indicating means to be used should have been previously evaluated in combination with the manual motor controllers.

- When intended for use as a motor disconnecter the device shall be provided with a method of being locked in the OFF-position.

**CSA**

Nominal Voltage	
Voltage (V)	AC / DC
600	AC

Rated insulation voltage Ui	
Voltage (V)	AC / DC
600	AC

Rated thermal current		
Current (A)	Ambient temperature (°C)	Additional Text
100	0 - 40	-

**Horsepower rating**

Across-the-Line Motor Starting	Voltage (V)	No. of phases	No. of poles	Power (HP)	Ambient temperature [°C]
DOL	110 - 120	1	2	5	40
DOL	220 - 240	1	2	15	40
DOL	277 - 277	1	2	15	40
DOL	415 - 415	1	2	25	40
DOL	440 - 480	1	2	30	40
DOL	550 - 600	1	2	30	40
DOL	110 - 120	3	3	10	40
DOL	220 - 240	3	3	25	40
DOL	415 - 415	3	3	40	40
DOL	440 - 480	3	3	50	40
DOL	550 - 600	3	3	50	40

Temp. rating of wire	
Temperature rating (°C)	Current (A) Text
75	--

General Use					
AC / DC	Voltage (V)	Current (A)	No. of phases	No. of poles	No. of contacts in series
AC	277	100	1	1	1
AC	600	100	1	2	1
AC	600	100	3	3	1


**GENERAL TECHNICAL INFORMATION**

**Size of conductor**

composition of conductor	Min. / Max. value	No. of conductor per terminal	Cross section (mm <sup>2</sup> ) or (AWG/kcmil)	Material of the wire
Solid wire	Min.	1	2.5mm <sup>2</sup>	Copper
Flexible wire	Min.	1	4mm <sup>2</sup>	Copper
Flexible wire	Max.	1	35mm <sup>2</sup>	Copper
Flexible wire	Max.	1	AWG 2	Copper
Single-core or stranded wire	Min.	1	AWG 10	Copper
Single-core or stranded wire	Max.	1	AWG 1/0	Copper
Single-core or stranded wire	Max.	1	50mm <sup>2</sup>	Copper
Flexible wire with sleeve	Max.	1	35mm <sup>2</sup>	Copper
Flexible wire with ferrule according to DIN 46228	Min.	1	2.5mm <sup>2</sup>	Copper

**Stripping length**

Length (mm) --
14








**Recommended screw driver**

Type of screw driver	Value
Cross Screwdriver	PH2
Slot screwdriver according to DIN 5264	1,2x6,5


**Tightening torque of screws**

tightening torque (Nm)	tightening torque (lb-in)
3	27

**Approbations**

Specification	Marking
EAC	
CE marking	
UK Directives	
UL 60947-4-1; CSA C22.2 No. 60947-4-1	
CSA C.22.2 No.14	


**Approbations**

Specification	Marking
GB/T14048.3	 <small>GB/T14048.3</small>


**General Information**

- Text**
- Use only copper wires with or without tinned/silver-plated individual wires. Soldering the end of the wire before wiring is not allowed.
  - Terminals with factory fitted jumper links are tightened during production for loss prevention. When opening the terminal clamps, make sure that no factory fitted links get lost and that all wire connections are properly seated.
  - After wiring, ALL terminal screws must be tightened to the specified torque values.
  - The protection class of the selected mounting type may vary if optional extras are used.
  - Do not lubricate or treat contacts.
  - Switches may only be mounted, connected and set into operation by qualified persons according to the accepted rules of technology.

**Waste Electrical & Electronic Equipment (WEEE)**

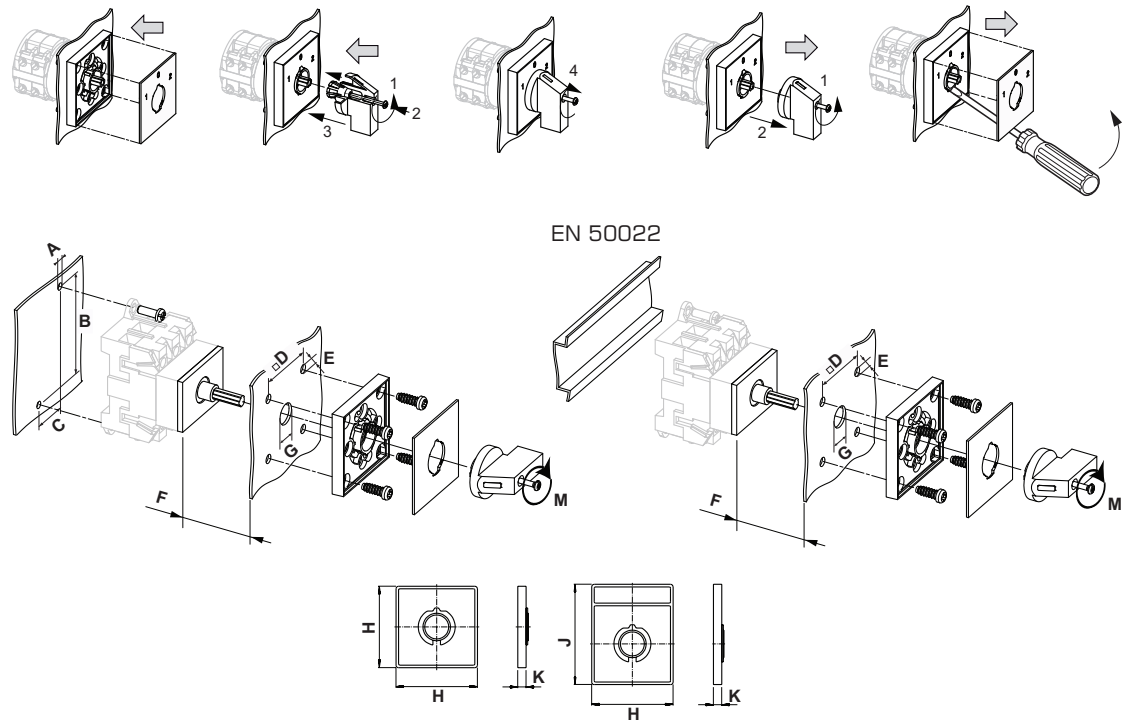
Picture name	Description
	Do not throw in the trash as care must be taken to ensure environmentally sound disposal and recycling. Please either use an environmentally friendly waste disposal company; return to the supplier for disposal; or return direct to the manufacturer, Kraus & Naimer. You can find local Kraus & Naimer offices at <a href="http://www.krausnaimer.com">www.krausnaimer.com</a>

**Proposition 65**

Picture name	Description
	WARNING: This product can expose you to chemicals including nickel and lead, which is known to the State of California to cause cancer. For more information go to <a href="http://www.P65Warnings.ca.gov">www.P65Warnings.ca.gov</a> .

Classification Contact: Rigid contact bridge
Classification Contact Mat: Silver
Classification Terminal: Screw terminal

**Mounting-VE**

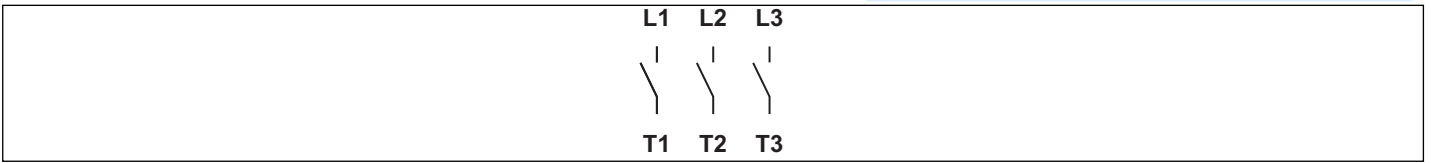


IP - Code front side	IP40
Stages	1,00 - 5,00
A	∅ 5,20 mm
B	H 90,00 mm
B_tol.	H ± 1,00 mm
C	H 25,00 mm
C_tol.	H ± 0,50 mm
D	□ 48,00 mm
E	∅ 5,00 mm
F	H ≤ 13,50 mm

G	Ø	10,00 - 15,00 mm
H	H	64,00 mm
J	H	78,00 mm
K	H	7,40 mm
M	↺	0,70 Nm

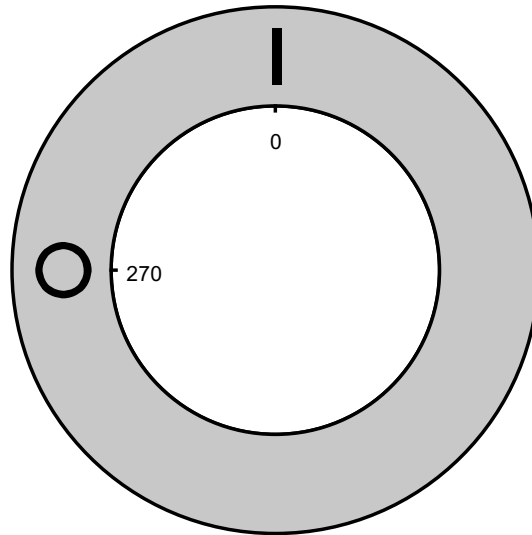
**Wiring diagram**

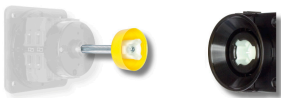
KG100.K300.VE



**Face plate**

S1.F456/C10.V11H





Sample image

### STANDARD DOOR CLUTCH

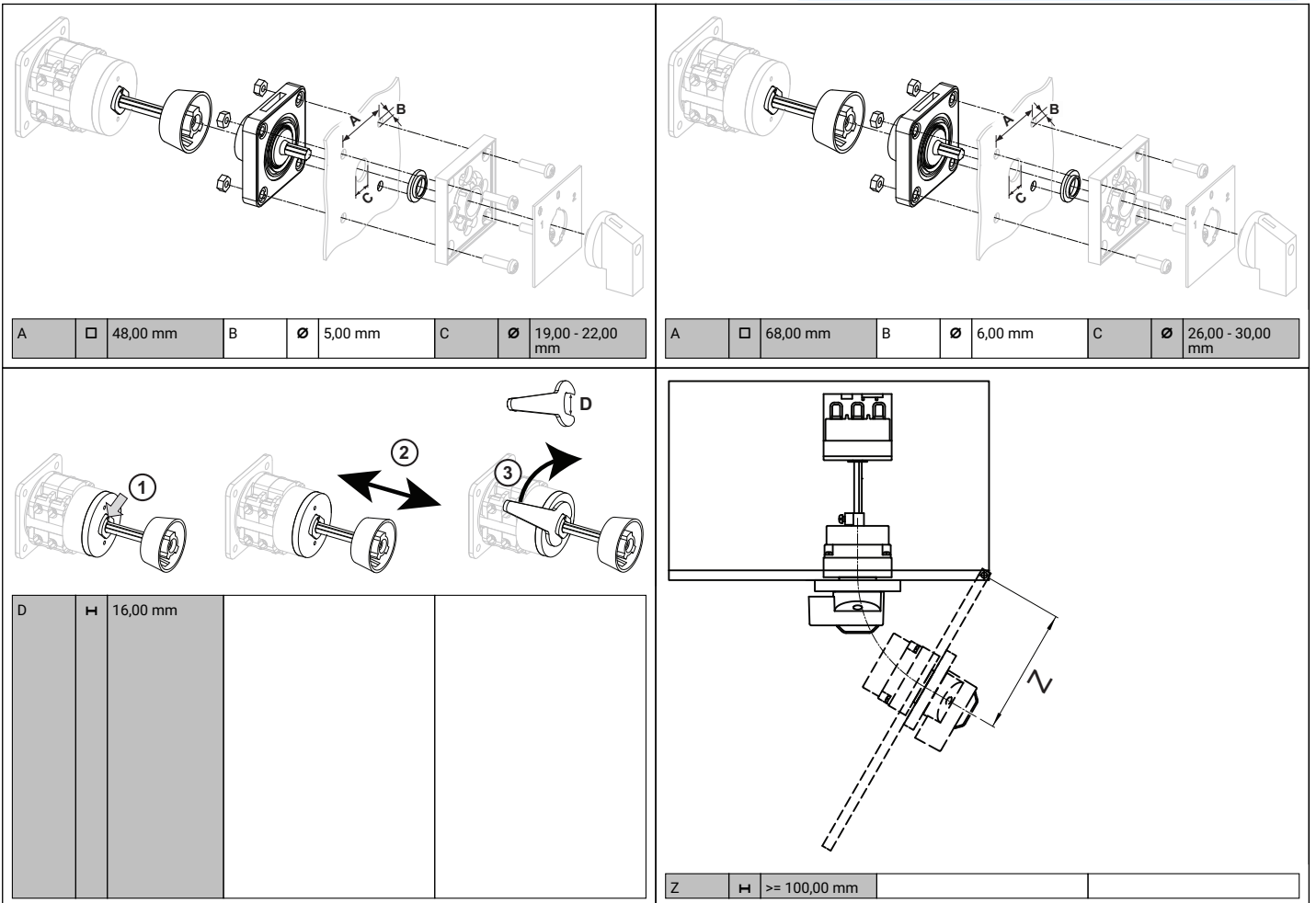
with shaft extension/asymmetric profile (with shear ring)

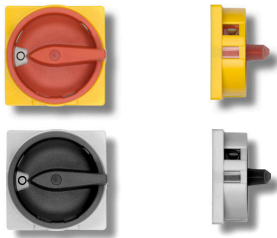
**Designation:** S1.M280D/A24S

**Type of interlock:** "A2" with protected profile, without interlock

**Shaft length:** "4" 98 - 118 mm shaft length

**Application:** "S" for type of mounting VE





Sample image

## PADLOCK DEVICE

with F-handle ring

**Designation:** S1.V840G/D61/B2

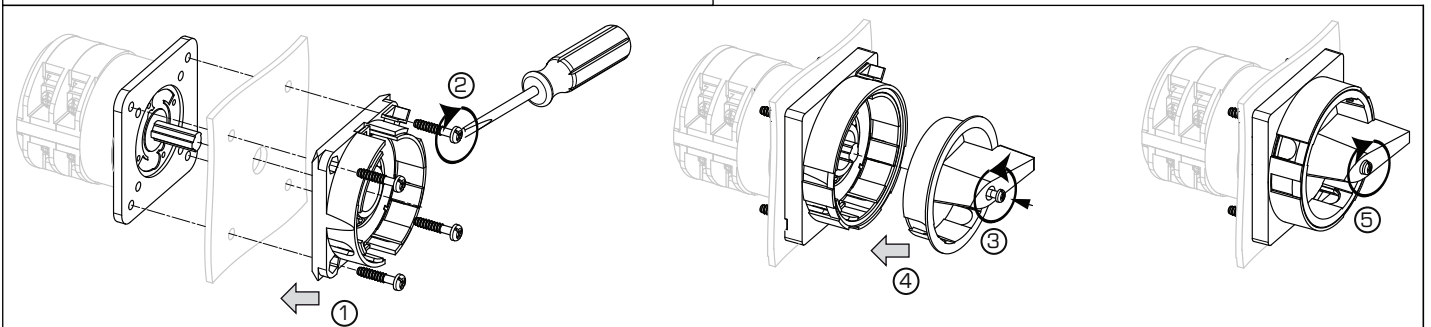
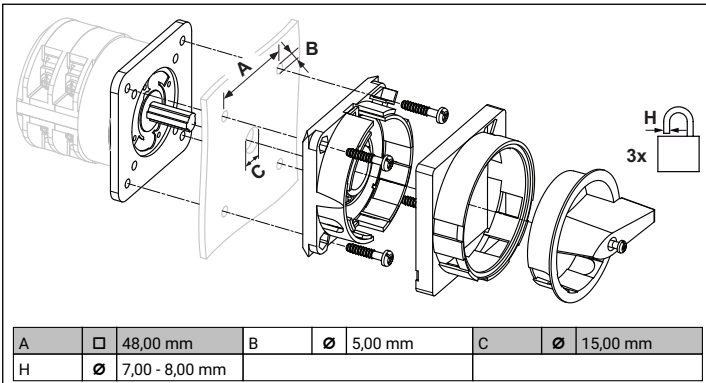
**Color of F-handle ring:** "D" red

**Color of face plate ring:** "6" yellow

**Locking position:** "1" at 270° (1x90°)

**Type of mounting:** "B" for type of mounting VE

**Switch type:** "2" for KA-, KG- and KH(R)-switches



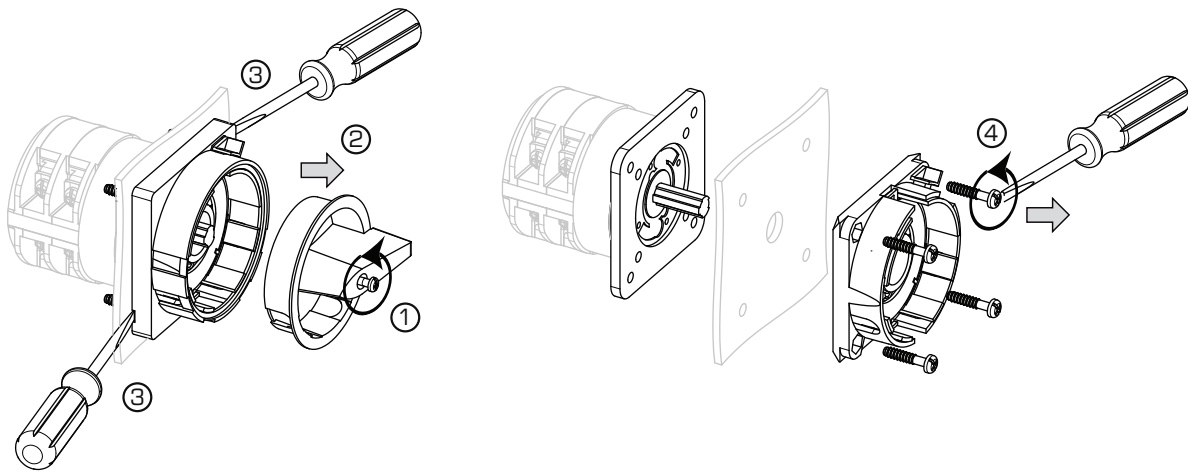
### MOUNTING

1 + 2 The padlock device has to be mounted by four cylinder head screws from the front.

3 Loosen the screw and

4 Push it into the handle onto the shaft

5 Fasten the screw.

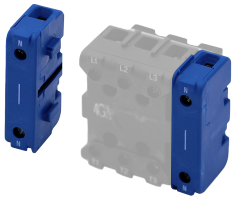


1 Loose handle screw

2 remove handle.

3 Insert a proper auxiliary tool at those points of the frame of the device which are marked by a screw driver on the drawing and remove the frame.

4 Fixing screws can be loosen now.



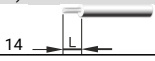

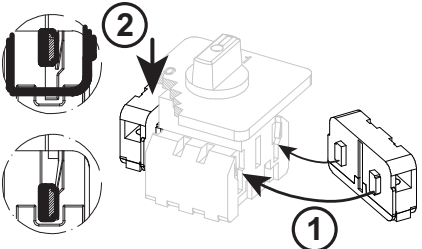
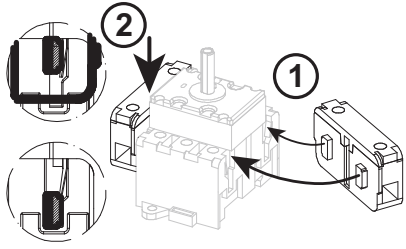
Sample image

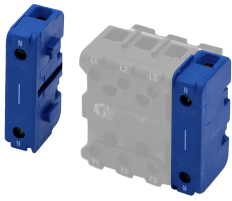
## GROUND TERMINAL (PE)

for KG- and KH-Switches

**Designation:** K2.H052/C

**Switch type:** "C" for KG80 - KG100C

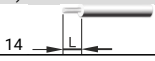


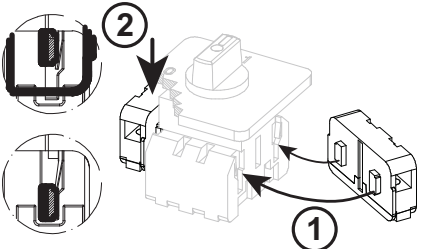
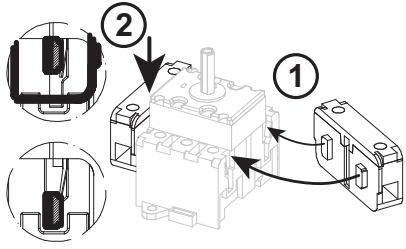

<b>UL60947-4-1 , UL508</b>				
<b>Nominal Voltage</b>				
Voltage (V) AC / DC				
600 AC				
<b>Rated insulation voltage Ui</b>				
Voltage (V) AC / DC				
600 AC				
<b>Rated thermal current</b>				
Current (A)	Ambient temperature (°C) Additional Text			
100	0 - 40 -			
<b>GENERAL TECHNICAL INFORMATION</b>				
<b>Size of conductor</b>				
composition of conductor	Min. / Max. value	No. of conductor per terminal	Cross section (mm <sup>2</sup> ) or (AWG/kcmil)	Material of the wire
Flexible wire	Max.	1	35mm <sup>2</sup>	Copper
Flexible wire	Max.	1	AWG 2	Copper
Single-core or stranded wire	Max.	1	AWG 1/0	Copper
Single-core or stranded wire	Max.	1	50mm <sup>2</sup>	Copper
Flexible wire with sleeve	Max.	1	35mm <sup>2</sup>	Copper
<b>Stripping length</b>		Length (mm) --		
				
<b>Recommended screw driver</b>		Value		
Type of screw driver		PH2		
Slot screwdriver according to DIN 5264		1,2x6,5		
<b>Tightening torque of screws</b>		tightening torque (Nm)		tightening torque (lb-in)
		3		27
<b>Approbations</b>		Marking		
Specification				
UL 60947-4-1; CSA C22.2 No. 60947-4-1				
CSA C.22.2 No.14				
<b>General Information</b>		Text		
<p>- Use only copper wires with or without tinned/silver-plated individual wires. Soldering the end of the wire before wiring is not allowed.</p> <p>- Terminals with factory fitted jumper links are tightened during production for loss prevention. When opening the terminal clamps, make sure that no factory fitted links get lost and that all wire connections are properly seated.</p> <p>- After wiring, ALL terminal screws must be tightened to the specified torque values.</p>				
				
PE		PE		



Sample image

**NEUTRAL TERMINAL (N)**  
for KG- and KH-Switches

**Designation:** K2.H053/C  
**Switch type:** "C" for KG80 - KG100C

<b>UL60947-4-1 , UL508</b>				
<b>Nominal Voltage</b>				
Voltage (V) AC / DC				
600 AC				
<b>Rated insulation voltage Ui</b>				
Voltage (V) AC / DC				
600 AC				
<b>Rated thermal current</b>				
Current (A)	Ambient temperature (°C) Additional Text			
100	0 - 40 -			
<b>GENERAL TECHNICAL INFORMATION</b>				
<b>Size of conductor</b>				
composition of conductor	Min. / Max. value	No. of conductor per terminal	Cross section (mm <sup>2</sup> ) or (AWG/kcmil)	Material of the wire
Flexible wire	Max.	1	35mm <sup>2</sup>	Copper
Flexible wire	Max.	1	AWG 2	Copper
Single-core or stranded wire	Max.	1	AWG 1/0	Copper
Single-core or stranded wire	Max.	1	50mm <sup>2</sup>	Copper
Flexible wire with sleeve	Max.	1	35mm <sup>2</sup>	Copper
<b>Stripping length</b>		Length (mm) --		
				
<b>Recommended screw driver</b>		Value		
Type of screw driver		PH2		
Cross Screwdriver		1,2x6,5		
Slot screwdriver according to DIN 5264				
<b>Tightening torque of screws</b>		tightening torque (Nm)		tightening torque (lb-in)
		3		27
<b>Approbations</b>		Marking		
Specification		 		
UL 60947-4-1; CSA C22.2 No. 60947-4-1				
CSA C.22.2 No.14				
<b>General Information</b>		Text		
<p>- Use only copper wires with or without tinned/silver-plated individual wires. Soldering the end of the wire before wiring is not allowed.</p> <p>- Terminals with factory fitted jumper links are tightened during production for loss prevention. When opening the terminal clamps, make sure that no factory fitted links get lost and that all wire connections are properly seated.</p> <p>- After wiring, ALL terminal screws must be tightened to the specified torque values.</p>				
				
				

## AUXILIARY CONTACTS

(cam operated) for switch type KG20 - KG100C and KH(R)16 - KH(R)25B

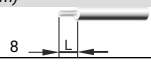
**Designation:** K2.M510A/1AA-B

**Number of contacts:** "1" 1 auxiliary contact

**Operation of contacts:** "A" auxiliary contact(s) closed in pos. 1 (NO)

**Type of version:** "A" 1. auxiliary contact module

**Type of mounting:** "-B" for type of mounting VE, VE2, silver contacts

IEC 60947-3 EN 60947-3, VDE 0660 Teil 107					
<b>Nominal Voltage</b>					
			Voltage (V) AC / DC		
			690 AC		
<b>Rated uninterrupted current Iu/Ith</b>					
Current (A)	Ambient temperature (°C)	Peak temperature (°C) additional requirements			
16	55	60 Ambient temperature +55°C during 24 hours with peaks up to +60°C			
<b>Rated operational current Ie</b>					
Utilization category			Voltage (V)		Current (A)
AC-15			110 - 240		6
AC-15			380 - 440		3
AC-15			500		1,50
AC-21A			20 - 690		16
UL60947-4-1 , UL508					
<b>Nominal Voltage</b>					
			Voltage (V) AC / DC		
			600 AC		
<b>Rated insulation voltage Ui</b>					
			Voltage (V) AC / DC		
			600 AC		
<b>Rated thermal current</b>					
		Current (A)	Ambient temperature (°C) Additional Text		
		10	0 - 40 --		
<b>Pilot duty rating code</b>					
Duty Code					
A600					
<b>General Use</b>					
AC / DC	Voltage (V)	Current (A)	No. of phases	No. of poles	No. of contacts in series
AC	600	10	1	1	1
GENERAL TECHNICAL INFORMATION					
<b>Size of conductor</b>					
composition of conductor	Min. / Max. value	No. of conductor per terminal	Cross section (mm <sup>2</sup> ) or (AWG/kcmil)		Material of the wire
Solid wire	Min.	1	0.5mm <sup>2</sup>		Copper
Solid wire	Min.	2	0.5mm <sup>2</sup>		Copper
Flexible wire	Min.	1	0.75mm <sup>2</sup>		Copper
Flexible wire	Min.	2	0.75mm <sup>2</sup>		Copper
Flexible wire	Max.	2	2.5mm <sup>2</sup>		Copper
Flexible wire	Max.	2	AWG 14		Copper
Single-core or stranded wire	Max.	2	AWG 12		Copper
Single-core or stranded wire	Max.	2	2.5mm <sup>2</sup>		Copper
Flexible wire with ferrule according to DIN 46228	Min.	1	0.5mm <sup>2</sup>		Copper
Flexible wire with ferrule according to DIN 46228	Max.	2	2.5mm <sup>2</sup>		Copper
Flexible wire with ferrule according to DIN 46228	Min.	2	0.5mm <sup>2</sup>		Copper
<b>Stripping length</b>					
			Length (mm) --		
					
<b>Recommended screw driver</b>					
Type of screw driver			Value		
Cross Screwdriver			PH1		
Slot screwdriver according to DIN 5264			0,8x4		
<b>Tightening torque of screws</b>					
			tightening torque (Nm)	tightening torque (lb-in)	
			0,60	5	
<b>Conditions during transport and storing</b>					
Minimum temperature (°C)			Maximum temperature (°C) additional requirements		
-40			85 In case of temperatures below -5°C no shock load permissible		

**General Information**

**Text**

- Use only copper wires with or without tinned/silver-plated individual wires. Soldering the end of the wire before wiring is not allowed.
- Terminals with factory fitted jumper links are tightened during production for loss prevention. When opening the terminal clamps, make sure that no factory fitted links get lost and that all wire connections are properly seated.
- After wiring, ALL terminal screws must be tightened to the specified torque values.
- Do not lubricate or treat contacts.
- Switches may only be mounted, connected and set into operation by qualified persons according to the accepted rules of technology.

**Classification Terminal: Screw terminal**

13



14